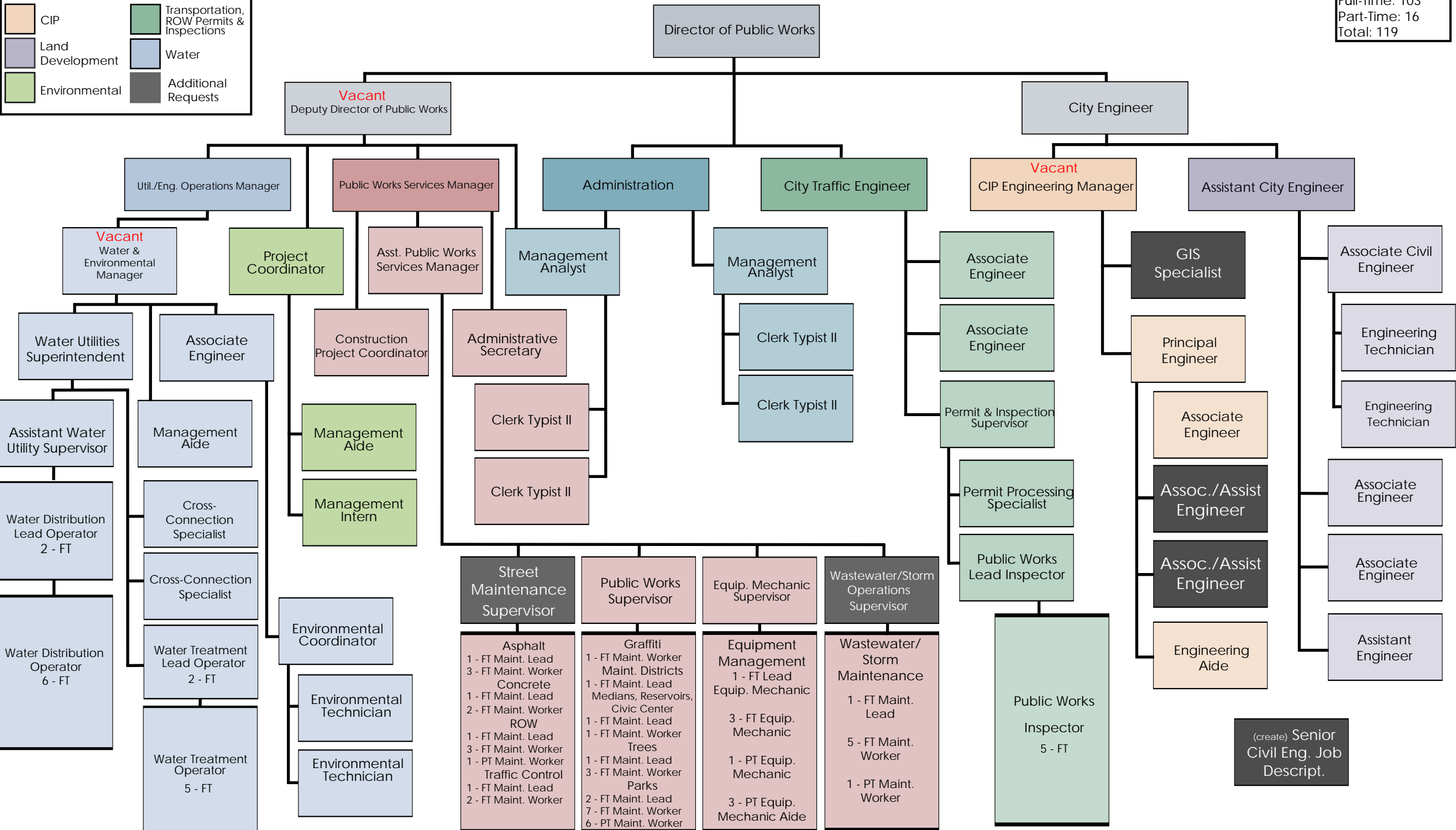


PUBLIC WORKS ORGANIZATION CHART

Employee Count
 Full-Time: 103
 Part-Time: 16
 Total: 119

	Administration		Services
	CIP		Transportation, ROW Permits & Inspections
	Land Development		Water
	Environmental		Additional Requests



PUBLIC WORKS CITY HALL MAIN LINE: 909-334-3265

PUBLIC WORKS SERVICE YARD: 909-334-3266